

DHcode.org

setup | Jupyter Notebook toolbar

toolbar

menu bar

tool bar

code cell

The screenshot shows the JupyterLab interface. At the top, the title bar displays 'jupyter My_Practice_File Last Checkpoint: 17 minutes ago (autosaved)'. Below this is a menu bar with 'File', 'Edit', 'View', 'Insert', 'Cell', 'Kernel', and 'Help'. A toolbar contains icons for file operations (save, new, open, close), navigation (up, down), execution (run, stop), and other functions. A dropdown menu is set to 'Code'. Below the toolbar is a code cell with the prompt 'In []:'. On the right side, there is a 'Logout' button. Red text annotations include 'file name' with an arrow pointing to the file name in the title bar, and 'logout' with an arrow pointing to the 'Logout' button.

Before clicking the logout button, go to the File menu:
1. Click Save and Checkpoint
2. Close and Halt

logout

Note:

We won't use the View or Cell menu bar functions so they are not included in this document.

file menu

File menu bar

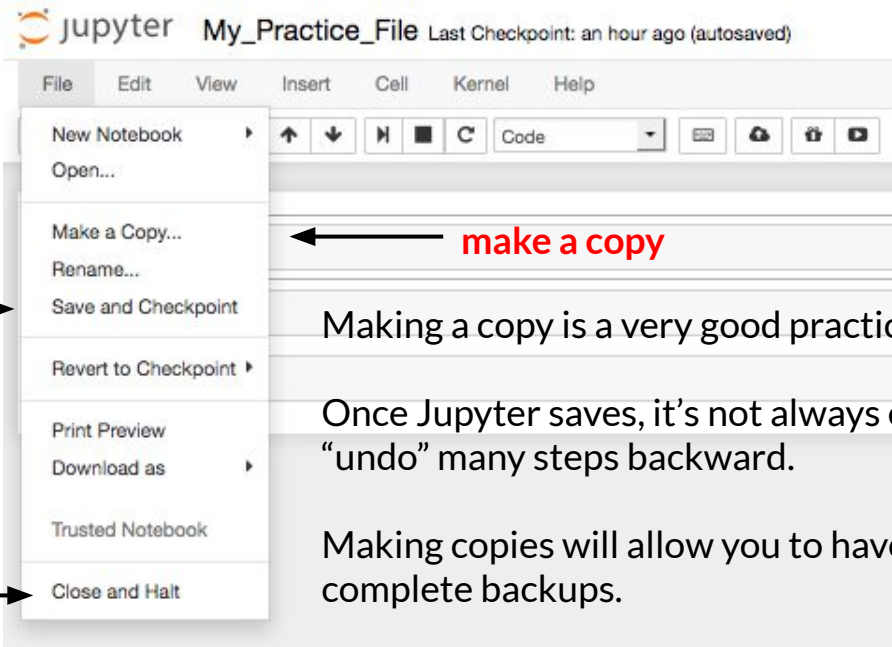
save and checkpoint

close and halt

This is a critical function.
Be sure to save your new file immediately.
Periodically, go back and save the file
while you work on it.

Don't rely on the "autosave" function

Close the file and make it stop running



make a copy

Making a copy is a very good practice.

Once Jupyter saves, it's not always easy to
"undo" many steps backward.

Making copies will allow you to have
complete backups.

edit menu

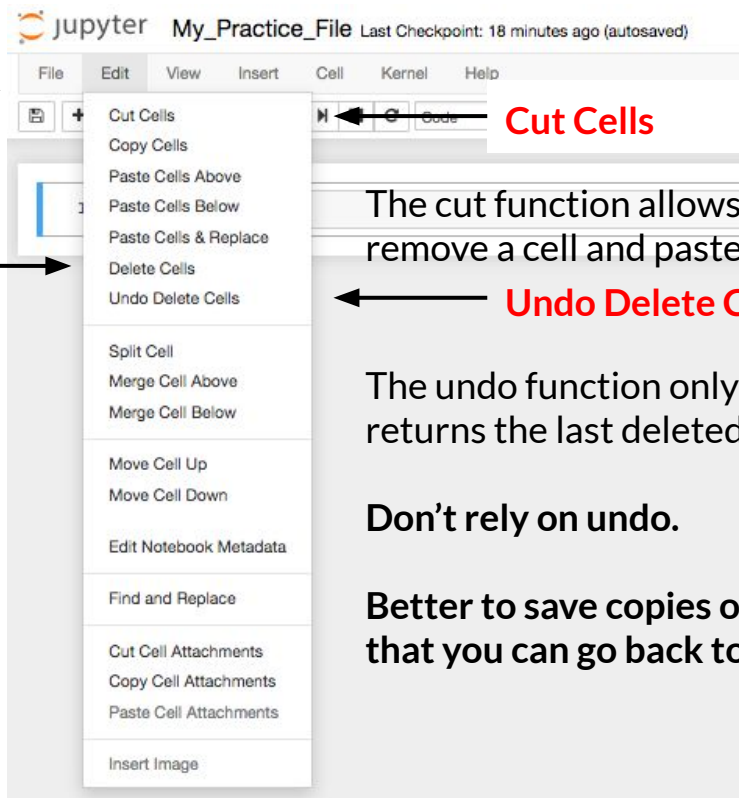
Edit menu bar



Delete Cells



The delete cell function removes the cell but does not allow it to be pasted.



Cut Cells

The cut function allows you to remove a cell and paste it elsewhere.

Undo Delete Cells

The undo function only reliably returns the last deleted cell.

Don't rely on undo.

Better to save copies of the file that you can go back to.

insert menu

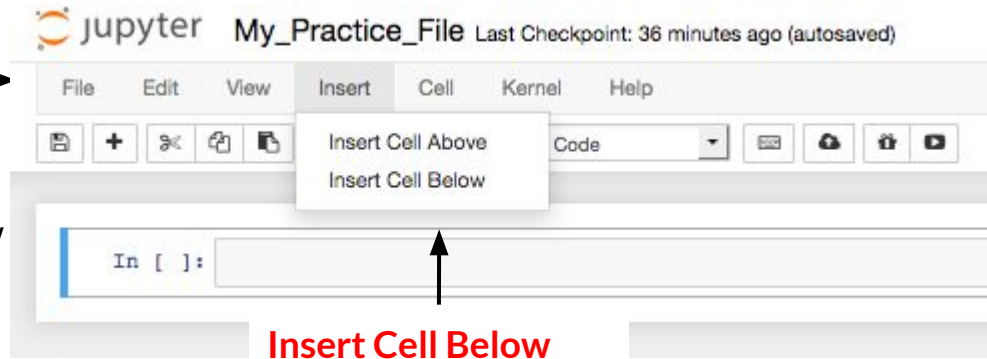
Insert menu bar



Insert Cell Above



The insert cell above function adds a new cell on top of the cell you last clicked on.



The insert cell below function adds a new cell under the cell you last clicked on.

kernel menu

Kernel menu bar

Interrupt

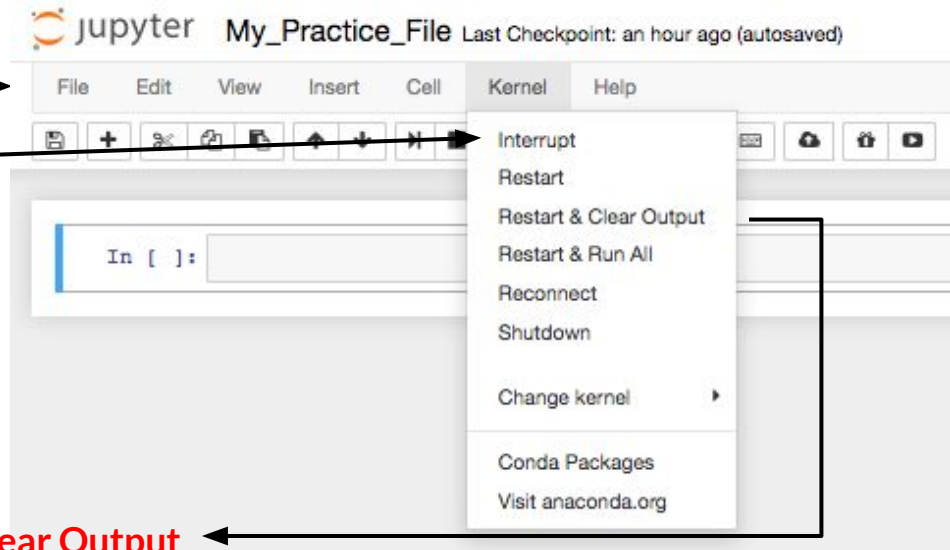
The interrupt function stops Jupyter Notebook from completing its current task.

This can be helpful when it seems stuck or is slow.

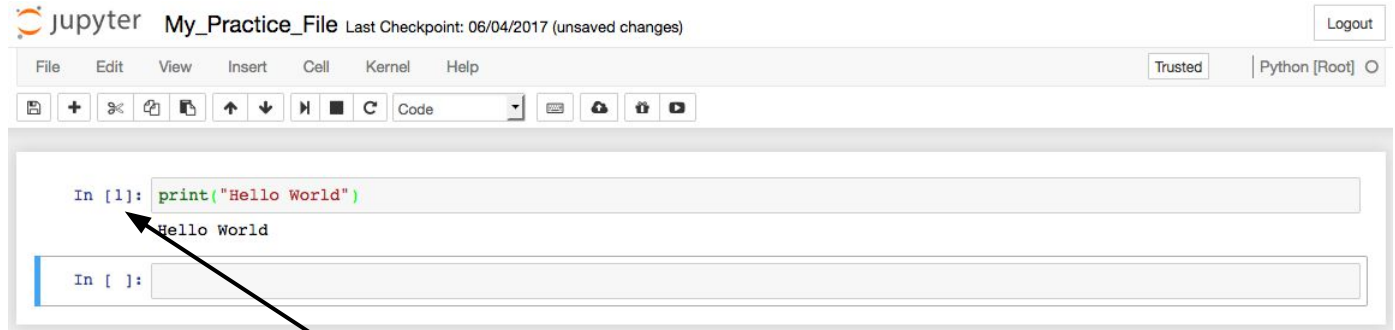
Restart & Clear Output

This function is very important if you want to re-run the program but remove any outputs, like user inputs or print statements.

It won't delete the code you have typed but will erase the outputs.



code cell



code cell →

1. To write code, place your cursor and click anywhere inside the gray part of the first empty code cell box

Once you've written the code, you will need to "execute" (get the code to run).

To "execute", hold the Shift key down and then click the Enter/Return key.

2. How do you know the cell executed? There will be a number inside the line bracket.

The executed code may or may not print something below it. Depends on what you're trying to do.